

Developed by



**SITE ADDRESS** Sardar Nagar No. 4, Sion Division, Wadala (East), Hemant Manjrekar Road, Beside GTB, Monorail Station, Mumbai 400037.

**SIDDHA HEAD OFFICE (MUMBAI)** Godrej Colesium, 2<sup>nd</sup> Floor, 201/202, A Wing Somaiya Hospital Road, Everard Nagar, Sion, Mumbai - 400022.



The project has been registered via MahaRERA Registration No., P51900021027 | P51900021040 | P51900021044 | P51900021031 and is available on the website <https://maharera.mahaonline.gov.in> under registered projects. Disclaimer: Images shown are for representational purposes only and may not bear any resemblance to actual features/offerings.

DISCLAIMER: This Advertisement/printed material does not constitute an offer or contract of any nature whatsoever between the promoters and the recipient. All transactions in this development shall be subject to and governed by the terms & conditions of the agreement for sale to be entered into between the parties. All internal dimensions for carpet area are from unfinished wall surfaces. Minor variations up to (+/-) 3% in actual carpet areas may occur on account of site conditions/ columns / finishes etc. In toilets, the carpet areas are inclusive of ledge walls (if any). Conversion: 1 sq. Mtr. = 10.764 sq. ft. 1 meter = 3.28 feet. This project registered under the name Siddha Sky Phase 1, 2, 3, 4. \*T&C Apply.

In partnership with  
**starOm** | **SPRING CITY**  
REALTY GROUP

Project financed by  
**IndusInd Bank**

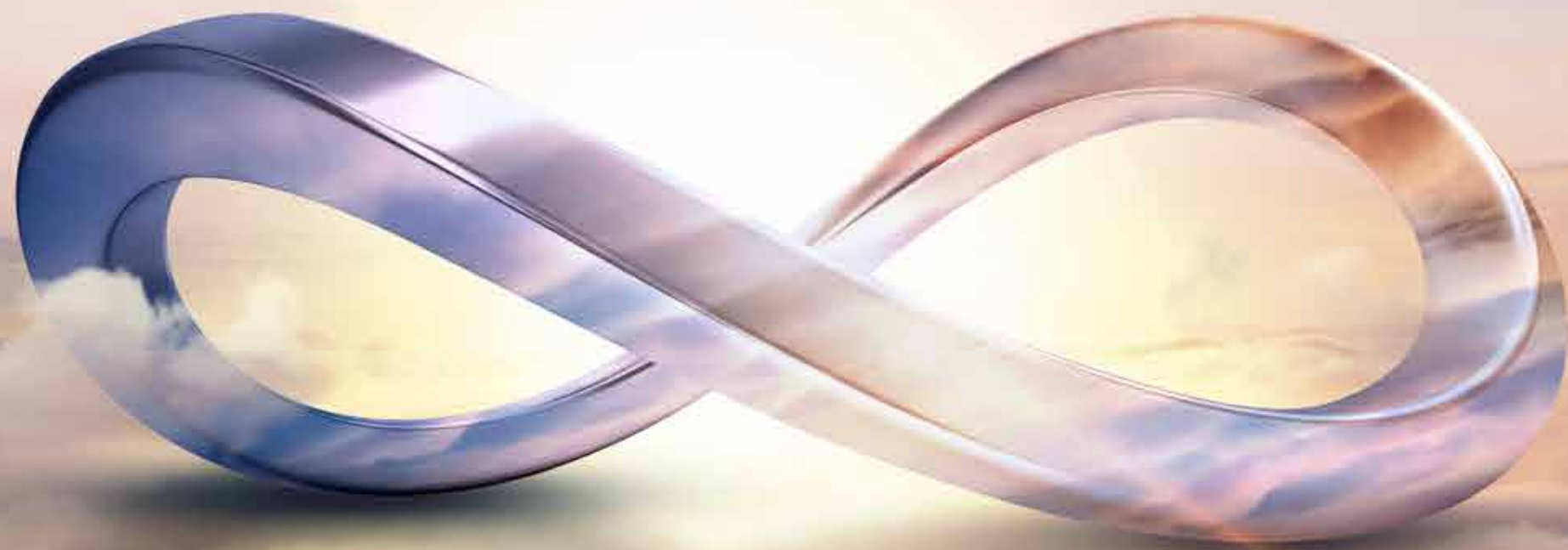


A COMPLETE LIFESTYLE FOR YOU TO

**GO INFINITE**

Live in the sky,  
Live the infinite.

Welcome to the rooftop skywalk of Siddha Sky, built 400 ft above the ground. Discover the privilege of infinite with over 25+ amenities on the rooftop, ready to entertain and rejuvenate you at any given time. Witness the gorgeous horizon of the cityscape while sipping your favorite drink in the Sky bar and feel privileged forever. Come, live above the ordinary.



# GO INFINITE

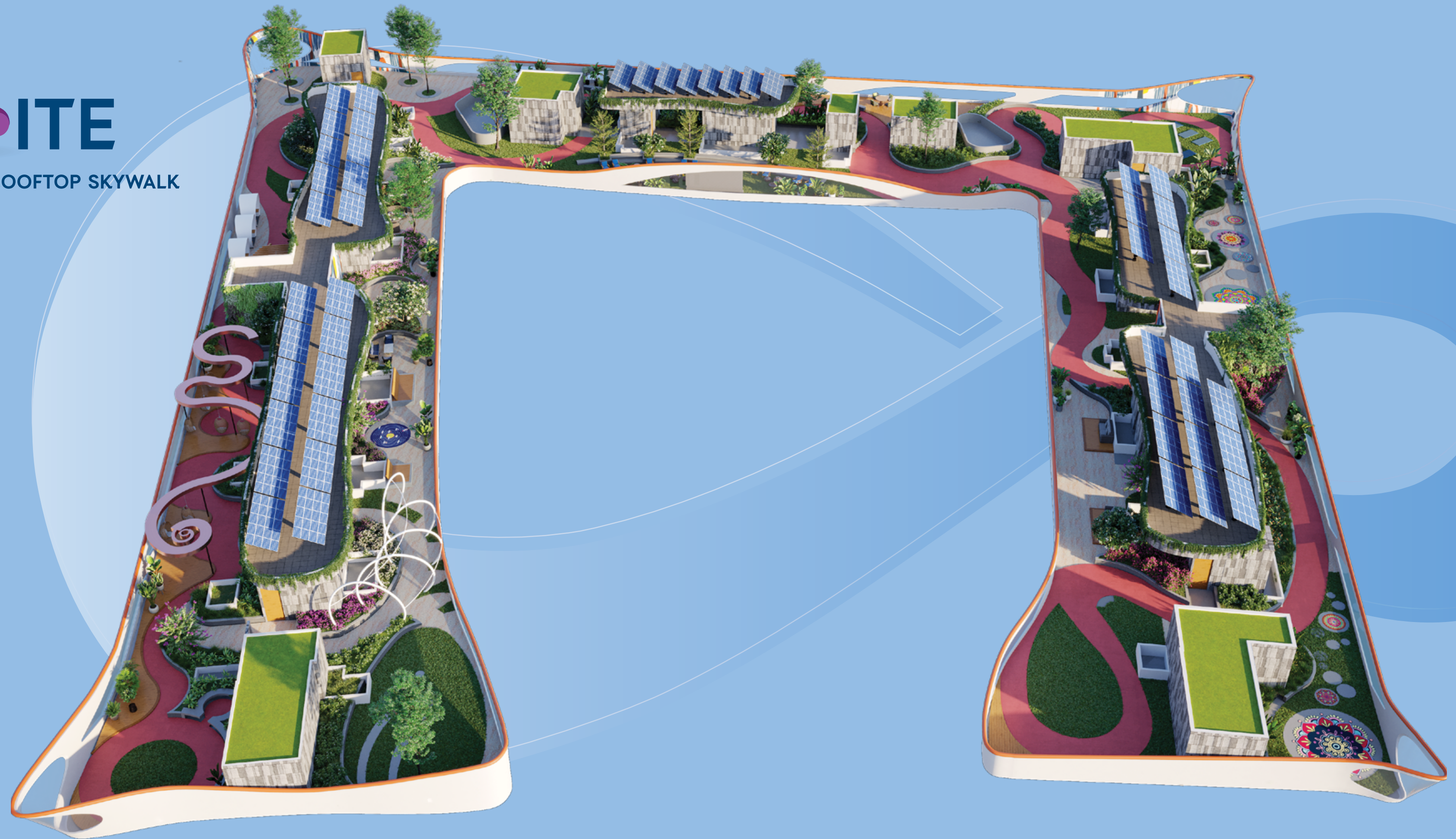
ON EXTRAVAGANCE WITH FINE AMENITIES  
AT THE ROOFTOP SKYWALK



# GO INFINITE

ON GOOD TIMES WITH AMENITIES ON ROOFTOP SKYWALK

- Sky Jog with Nature
- Informal Lawn Seating
- Art Corner
- Covered Lounge Seating
- Open Seating Area
- Star Gazing Deck
- Chalk Floor Drawing Corner
- Yoga Lawn with Stage
- Viewing Deck-Selfie Point
- Seating Under Tree
- Herbal Garden
- Projector Screen Wall
- Party Lawn with Amphitheatre
- BBQ with Dining Area
- Telescopic Viewing Point
- Sunrise Point & Vitamin D Point
- Sky Digi
- Brain Board Games
- Exhibit/Talent Wall
- Moon Garden Area
- Sunset View Seating
- Sky Lounge
- Red Ribbon Feature Structure
- Hammock Seating
- Pergola Seating
- Work/Study Pods with Wi-Fi







Artist's Impression

Amphitheatre on Rooftop Skywalk



Yoga & Telescopic Star Gazing on Rooftop Skywalk



Artist's Impression

Sky Bar on Rooftop Skywalk

GO INFINITE  
ON LUXURY LIVING

Presenting...

**SIDDHA**  
**sky**  
A SEJAL-SIDDHA  
PROJECT  
WADALA



Artist's Impression



Artist's Impression

**GO INFINITE**

ON STATURE WITH AN ICONIC LANDMARK

# MUMBAI

## THE CITY WITH EVERYTHING TO GO INFINITE

Being the financial capital of the country, Mumbai is growing Exponentially across Sectors facilitating the demand for properties. This trend will see an upward rise in the coming year for various reasons such as,

- Reduced Stamp Duty
- Lower home loan rates

Adding to these, Mumbai is returning to its normal growth rate.



Representative Images

WADALA – ALL SET TO

# GO INFINITE

Wadala is the new centre of the city with multiple infrastructural projects developing rapidly in and around. This massive developments ensure more opportunities for the future.



Stock Image



**Mumbai Trans-Harbour Sea Link**

A 22km-long sea bridge is being developed over the Mumbai Harbour. On completion, it will become the longest sea link in India.



**Bandra Versova Sea Link**

A 17.17km long bridge that will connect Versova, part of the Andheri suburb to the Bandra-Worli Sea Link, as part of the Coastal Road.



**Metro line**

The 32.32km fully elevated line will consist of 32 stations from Wadala to Kasarvadavali (Ghodbunder Road) via Ghatkopar, Mulund, and Teen Hath Naka.



**Sewri-Worli elevated Corridor (SWEC)**

A 5-km elevated corridor connecting the under-construction MTHL at Sewri on the east and the upcoming coastal road at Worli.



# GO INFINITE

WHEN YOU ENJOY THE LUXURY OF TIME

Wadala is emerging as the new hotspot for investment and development because of its location. It enjoys superb proximity to business hubs and infrastructural projects.

The project is centrally located in Wadala and is surrounded by schools, commercial places, healthcare facilities, and entertainment centres. It is also accessible from business hubs like BKC, Parel, and Fort.

# GO INFINITE

ON COMFORT AND CONVENIENCE



## BEST EDUCATIONAL INSTITUTES IN THE VICINITY

South Indian Education Welfare Society School	- 8 mins
National Kannada Education Society High School	- 9 mins
Auxilium Convent High School	- 10 mins
Sitaram Prakash High School	- 12 mins
VJTI	- 15 mins
Don Bosco	- 15 mins
ICT	- 16 mins
Dyaneshwar Vidyalaya	- 16 mins



## CLOSER TO THE BEST HEALTH CARE IN THE CITY

Chinmay Nursing Home	- 5 mins
Smt. S.R. Mehta & Sir K. P. Cardiac Institute	- 6 mins
Aditya Jyot Eye Hospital	- 9 mins
BPT Hospital	- 10 mins
K. J. Somaiya Hospital	- 10 mins
Nowrosjee Wadia Maternity Hospital	- 10 mins
Wadala TB Hospital	- 12 mins
Tata memorial hospital	- 23 mins



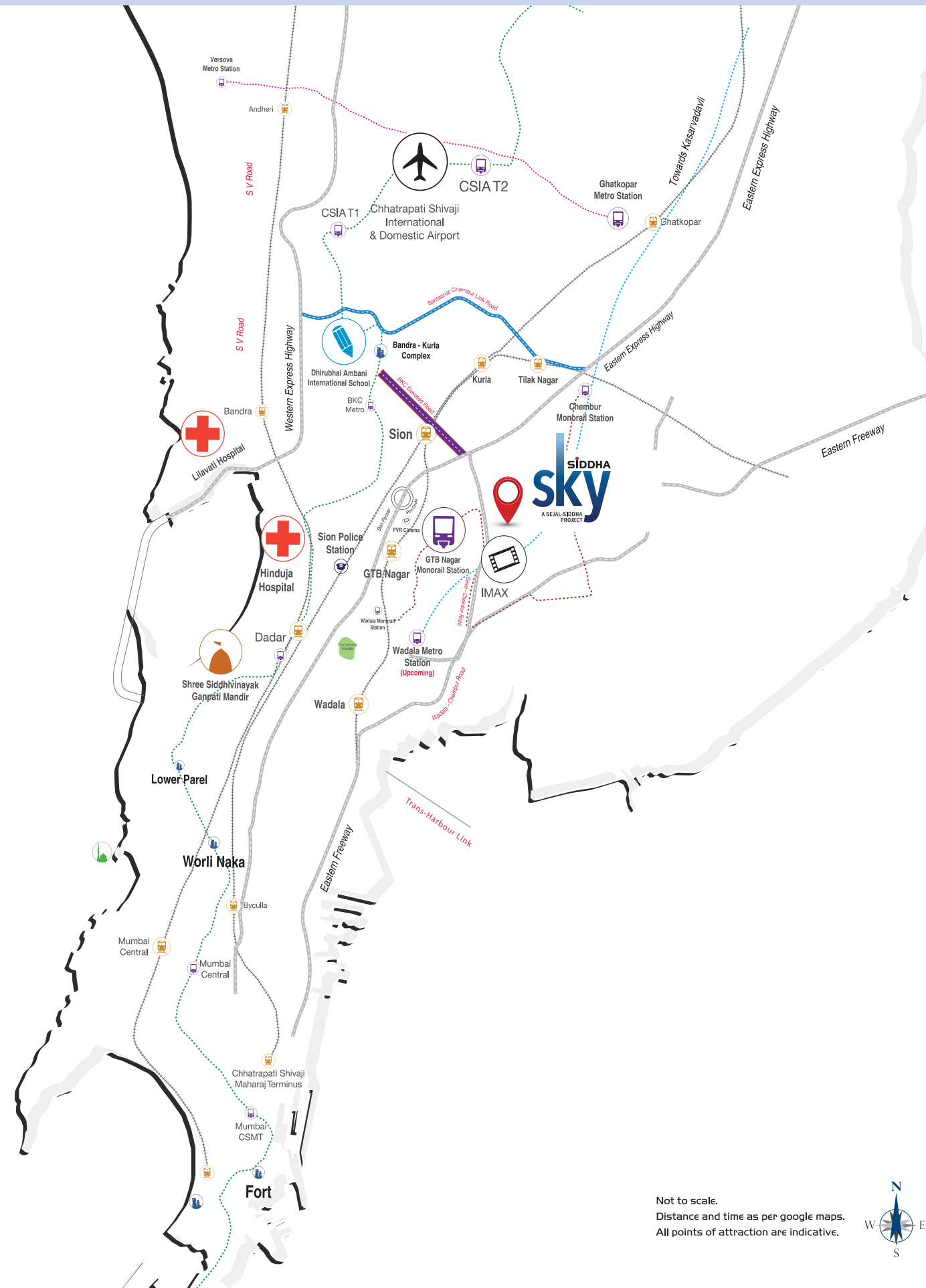
## CENTRALLY LOCATED

GTB Monorail Station	- 3 mins	Bandra Kurla Complex	- 10 mins
Eastern Freeway	- 3 mins	Sewri	- 14 mins
Wadala Business District	- 4 mins	Wadala station	- 15 mins
Eastern Express Highway	- 5 mins	Lower Parel	- 15 mins
Local Rail (Harbour & Western)	- 5 mins	Fort	- 20 mins

Distance and time as per google maps. All points of attraction are indicative.

# GO INFINITE

ON ACCESSIBILITY FOR EASE OF LIVING



Not to scale.  
Distance and time as per google maps.  
All points of attraction are indicative.



Wadala is a prime location in the heart of Mumbai. It is fast becoming a coveted address thanks to the development and a well-connected network of transport.

- GTB Monorail Station
- Eastern Freeway
- Proposed Wadala Metro Station

3 MIN

- Wadala Monorail Station
- Eastern Express Highway
- GTB Nagar Railway Station
- BKC Elevated Road

5 MIN

- Sion Railway Station
- Mumbai Trans Harbour Link
- Sewri-Chembur Road
- BKC

10 MIN

- Link Road (SCLR)
- Lower Parel

15 MIN

- Bandra Worli Sea Link
- Domestic & International Airport
- CSMT (Chhatrapati Shivaji Maharaj Terminus)

25 MIN

Stock Image



Representative Image

# GO INFI∞ITE

ON AFFLUENCE FOR AN EXTRAVAGANT LIFE



Kids' Play Area



Toddlers' Play Area



Multi-purpose Lawn / Party Space



Billiards Room



Swimming Pool



Gymnasium



Amphitheatre with Stage



Jacuzzi

... and many more

# GO INFINITE

ON EXCITEMENT WITH A 2 FLOOR CLUBHOUSE AND A HOST OF AMENITIES

Artist's Impression



Stock Image

Gymnasium



Artist's Impression

Kids' Play Area



Multi-purpose Party Space

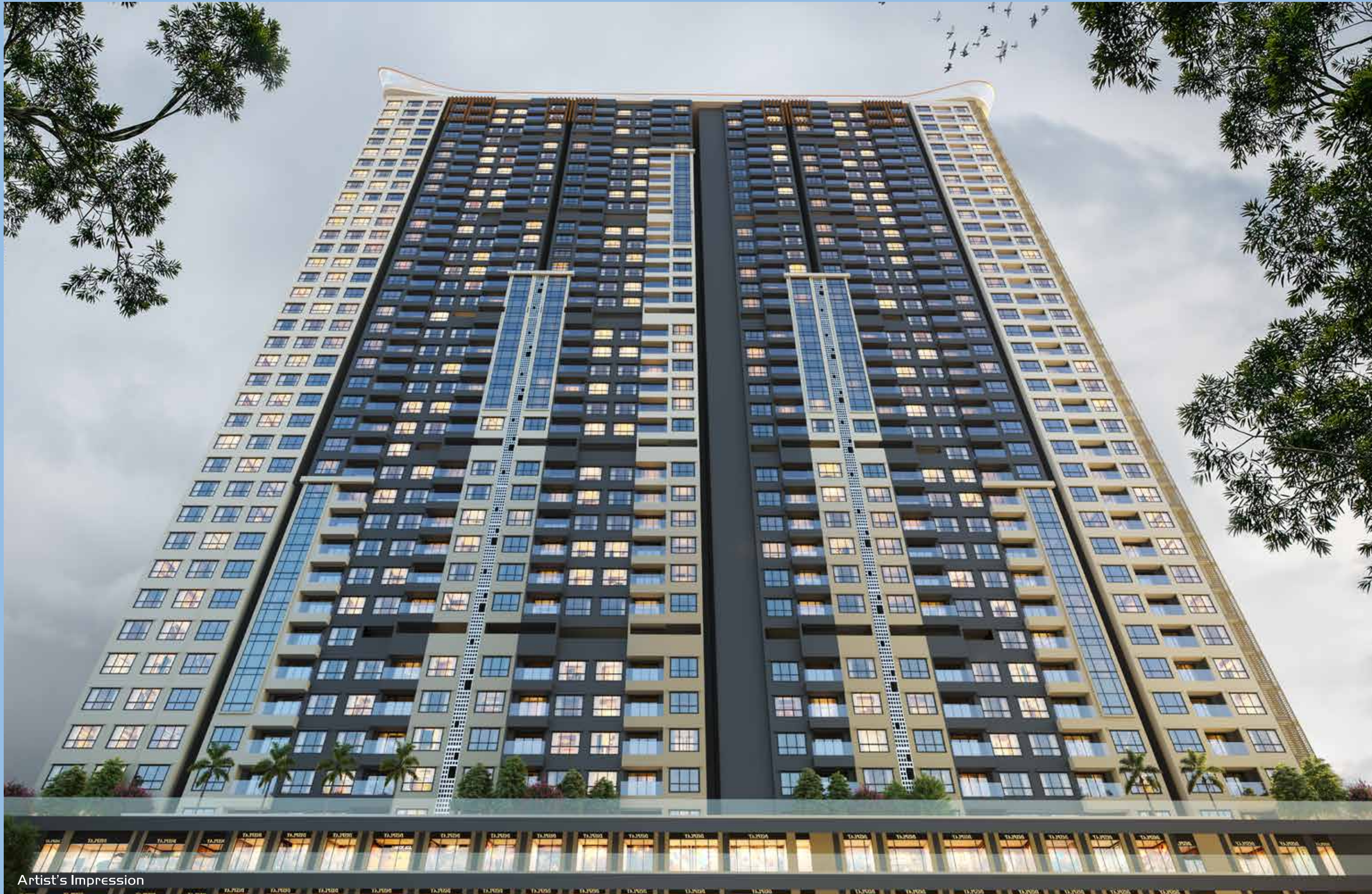


Artist's Impression

Kids' Pool



Adults Pool



Artist's Impression

**GO INFINITE**  
ON STYLE WITH AN EXCLUSIVE LIFESTYLE

# GO INFINITE

ON HAPPINESS WITH THOUGHTFUL PLANNING



Stock Image

Welcome to a life that offers more than your expectations!

Experience these smartly designed 2 and 3 bed residences. Come and explore this iconic masterpiece that will fill your life with happiness.



4+ acres of open spaces  
across multiple levels



3 towers with  
39 residential floors each



2 basements along with  
stilt and podium floors



6 elevators in each wing  
for ultra-comfort



Retail spaces  
for better convenience



# GO INFINITE

ON SPACIOUSNESS FOR EXTRAORDINARY LIVING

Soak up the luxury in our beautifully designed living rooms. A light, spacious area overlooking the greens where living becomes extraordinary.

Our magnificently planned bedrooms ensure zero wastage of space and offers ultimate comfort so that you get to dream great.

Experience the fun of cooking in our sleek yet straightforward kitchens, designed to ease your effort and raise your comfort.

Discover exquisitely designed bathrooms made just to uplift your experience and satisfy your senses as you relax and let the steam off.

# GO INFINITE

ON STATURE WITH THE BEST OF GLOBAL BRANDS

Stokc Image

## HOME SPECIFICATIONS

### Doors

Wooden frames  
Wooden flush shutters

### Windows

Powder coated aluminium windows

### Flooring

Living /Dining - Vitrified tiles  
Master bedroom - Vitrified tiles  
Other bedrooms - Vitrified tiles

### Kitchen

Floor - Double charged vitrified tiles  
Countertops - Granite with steel sink  
Dado - Ceramic tiles above counter top

### Toilet

Floor - Anti-Skid ceramic floor  
Dado - Ceramic tiles  
CP and Sanitary fixtures  
Chromium plated fittings with high-quality sanitary fixtures

### Electricals

Superior quality concealed copper wiring, latest modular switches and miniature circuit breakers, provision for broadband point

### Exterior finish

Texture paint

### Ground floor lobby finish

Ceiling - Gypsum/Grid false ceiling  
Lift fascia - Granite/Marble  
Wall cladding - Combination of tiles, marble and paint

### Typical floor lobby finish

Ceiling - Gypsum/Grid false ceiling  
Lift fascia - Granite/Marble  
Dado - Vitrified tiles and paint combination

**SIDDHA**  
A LEGACY OF EXCELLENCE



TYPICAL FLOOR PLAN  
TOWER 2B



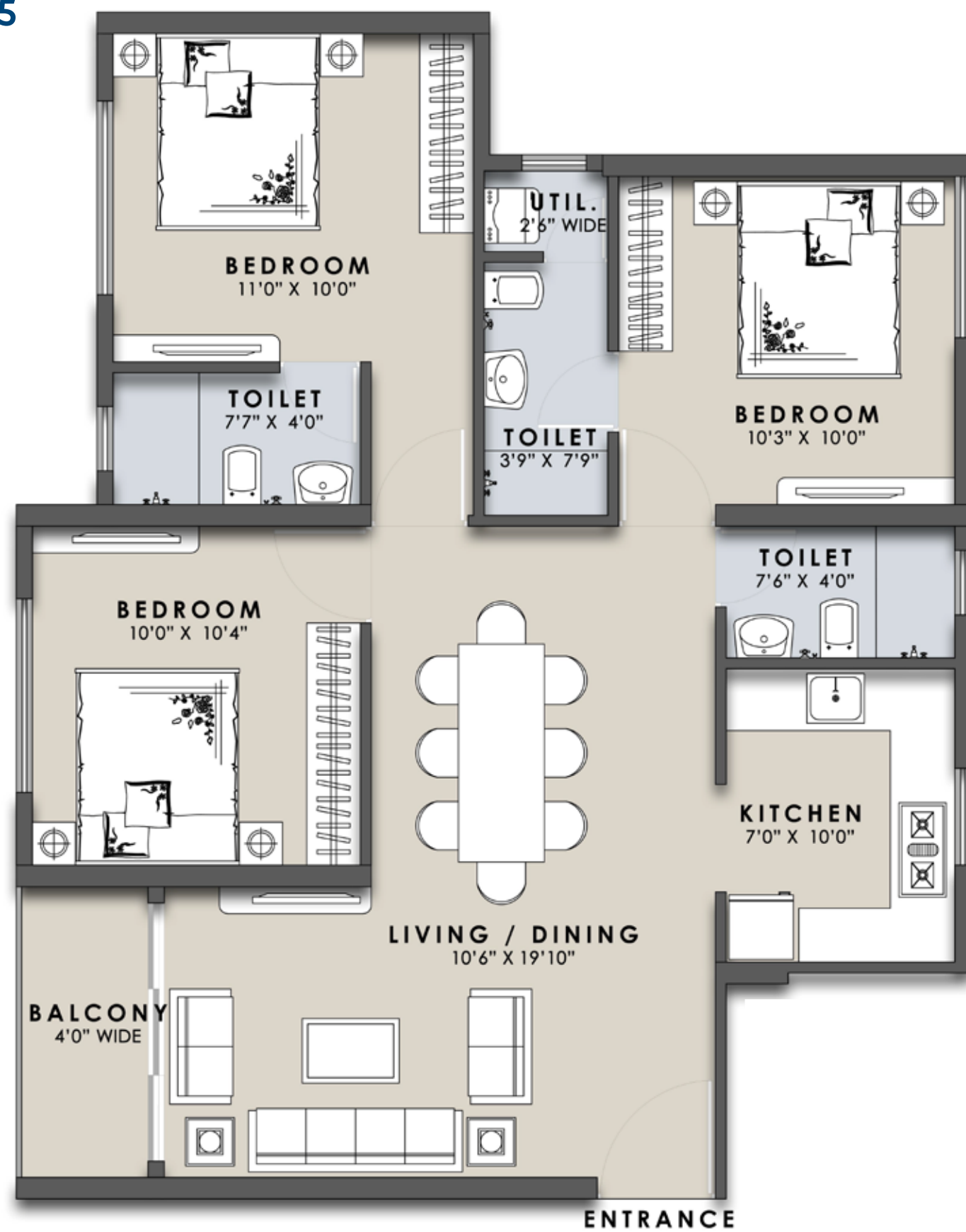
UNIT PLAN B-01  
2 BHK



UNIT PLAN B-04  
3 BHK

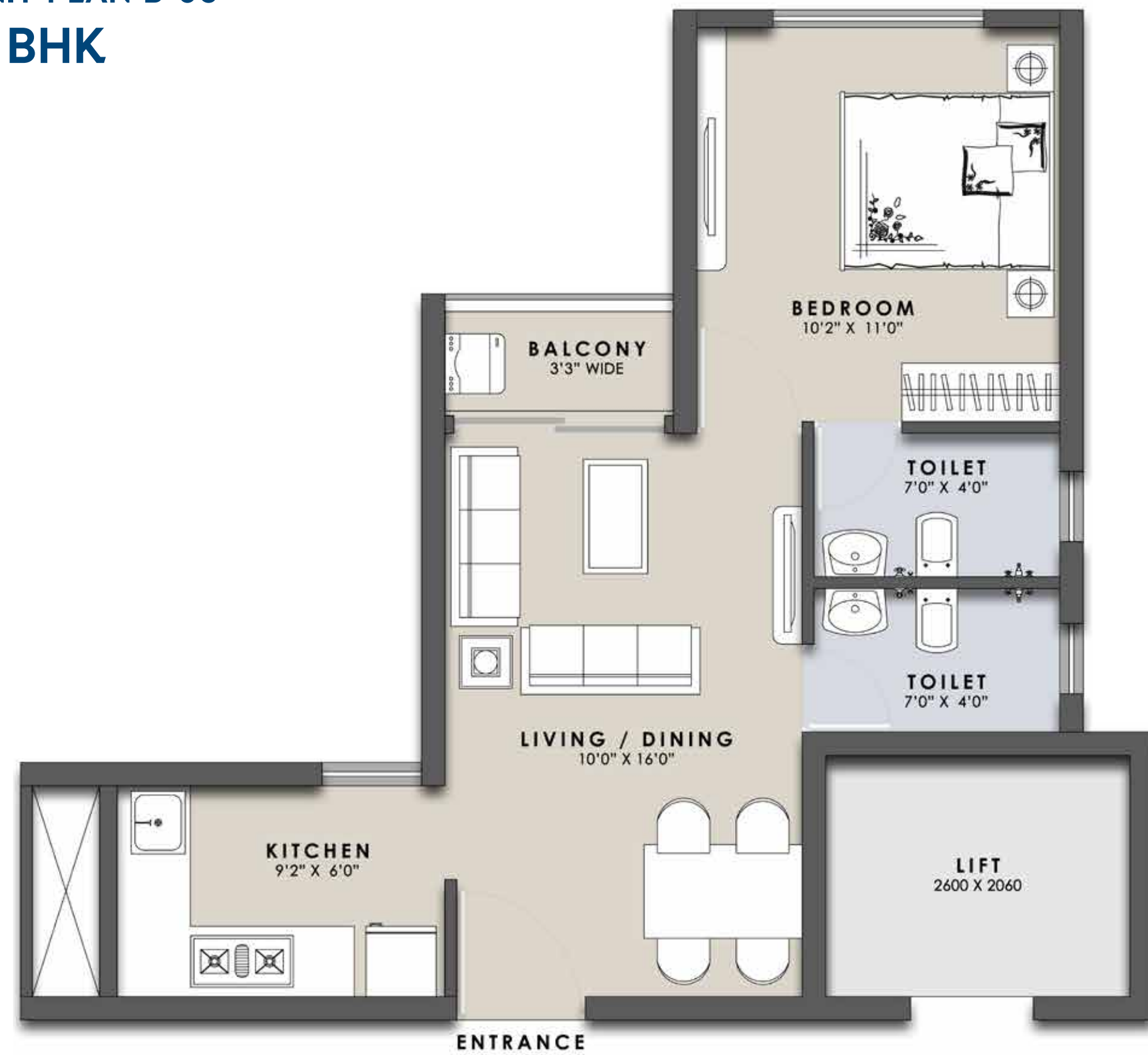


UNIT PLAN B-05  
3 BHK

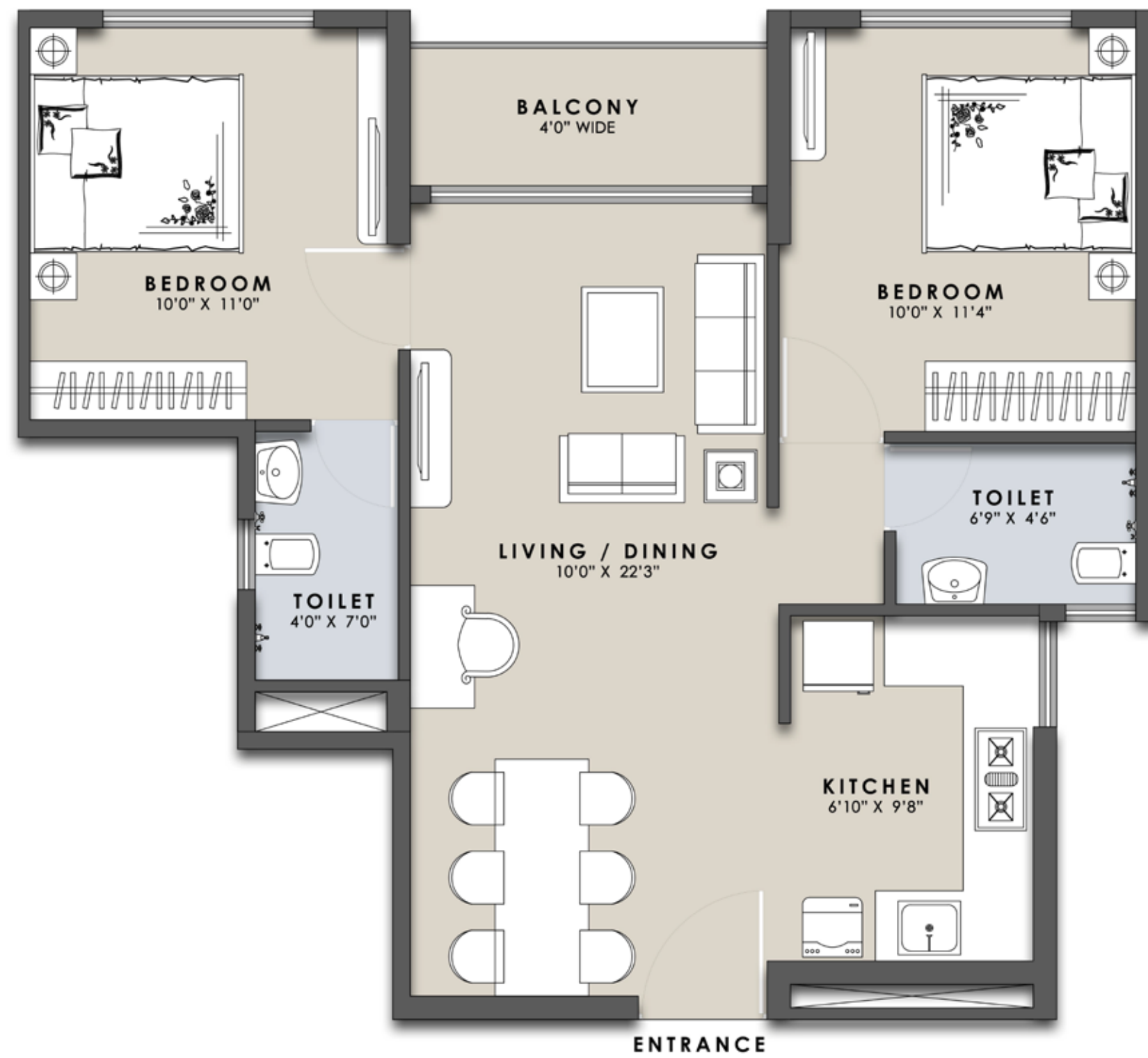


## UNIT PLAN B-06

### 1 BHK



UNIT PLAN B-07  
2 BHK



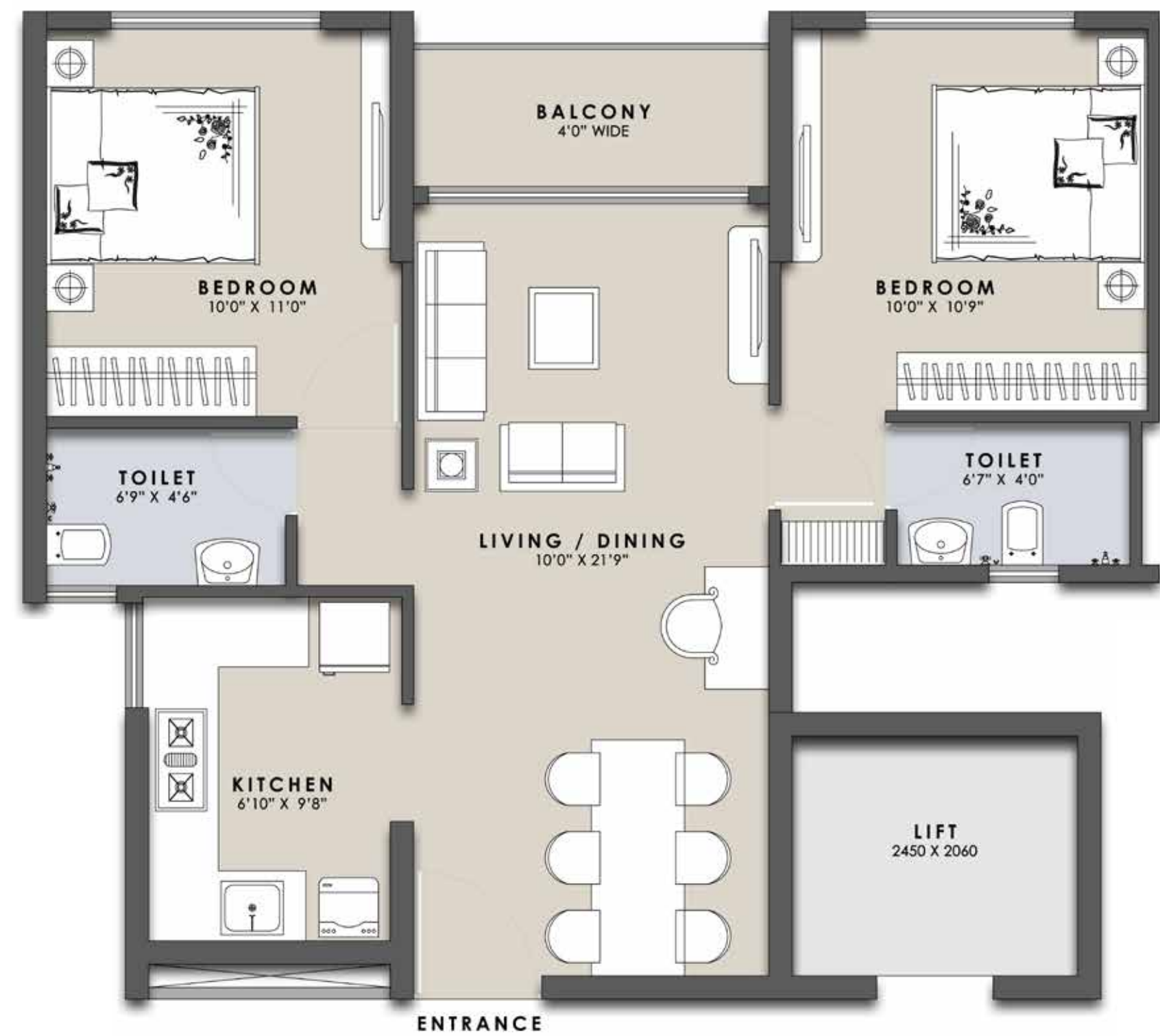
UNIT PLAN B-02  
2 BHK



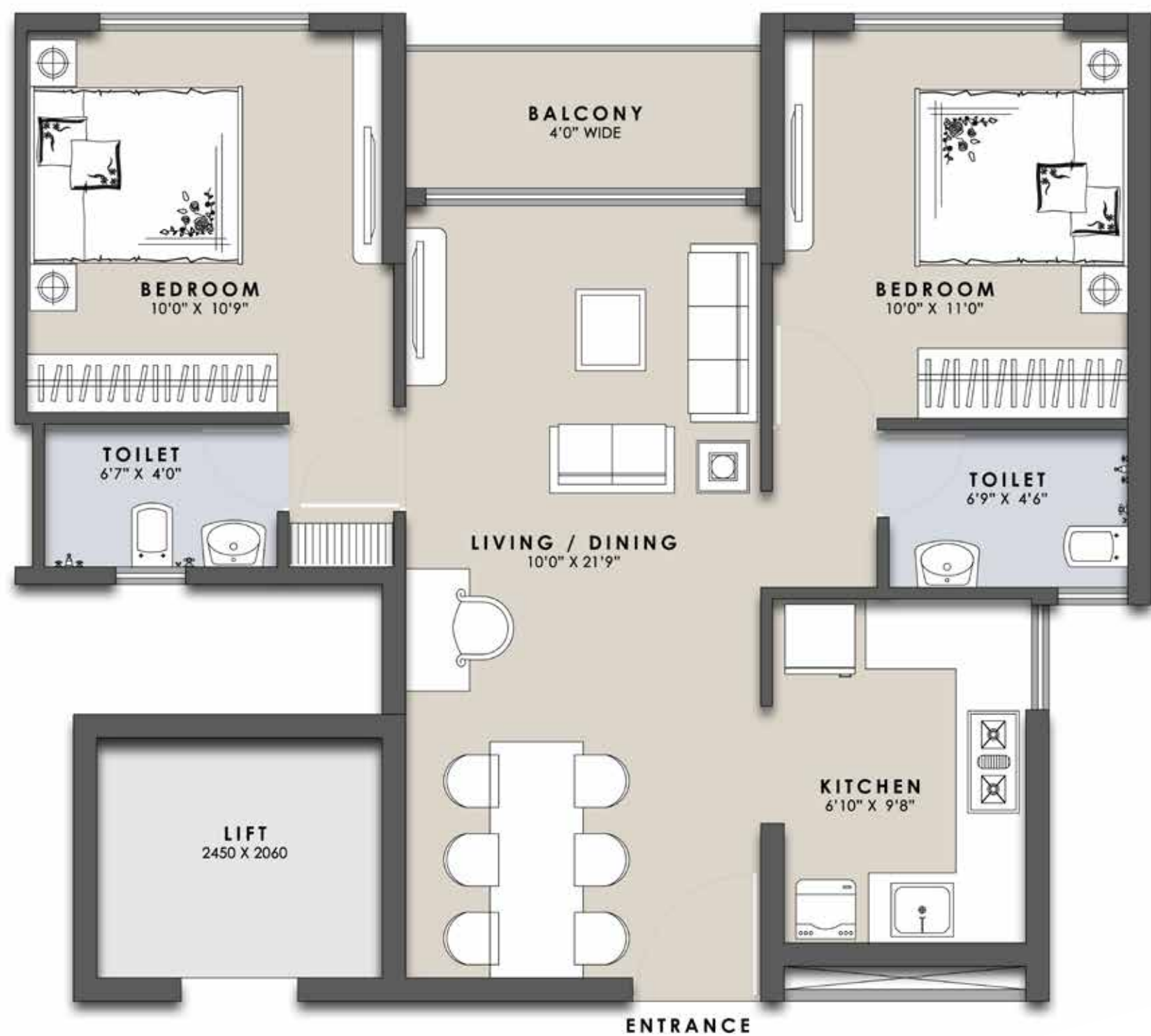
UNIT PLAN B-03  
2 BHK



UNIT PLAN B-08  
2 BHK



UNIT PLAN B-09  
2 BHK





Stokc Image

# GO INFINITE

ON ENHANCING YOUR LIFESTYLE WITH A TRUSTED LEGACY

## DEVELOPED BY

### SIDDHA

Since its inception in 1986, Siddha has been crafting residential and commercial spaces with a difference, to make good living affordable in 4 cities across India, namely Kolkata, Mumbai, Jaipur and Bengaluru.

Under the leadership of Group Chairman Shri Chandra Prakash Jain and Group Managing Director Shri Sanjay Jain, Siddha has won 25+ prestigious awards over the years. They have been the pioneers of Rooftop Skywalks in India.

### SEJAL

Sejal Realty was formed with the sole objective of changing the current landscape of Indian Infrastructure by focusing on the redevelopment of society and SRA projects to promote the conservation of built and natural heritage structures in Mumbai, which needed to be protected, nourished and maintained.

With the foresight and strong vision of our Chairman, Managing Director and a team of dedicated professionals, the Group is poised to launch many more projects, with its commitment to 'Excellence', 'Innovation' and 'Passion' with trust.

## IN PARTNERSHIP WITH



Star Om Group, under the leadership of Shri Vishal Jhagharia, has established itself as a premier realty company in less than a decade. Driven towards creating homes with a soul, the vision of the Group is to reach out to varied consumers with focused demand and to understand consumer requirement. The group intends to create landmark projects which reflects a lifestyle and culture in entirety. StarOm is now coming up with a variety of projects in the LIG, MIG, luxury residential as well as in the commercial, retail and industrial spaces.



Spring City Group is one of the leading real estate developers in East India. SCG is focusing on residential and commercial projects across the country since a decade, with the principles of innovation and reliability. The SCG team led by Shri Vijay Kumar Goyal, is well supported by industry experts, leading management and consultants along with over 50 combined years of management experience amongst the executives.

## TEAMING UP WITH THE BEST

### Design Architects



### Landscape Consultant



### Structural Consultant

